

ASID ICON
Essentials for Your Design Practice

icon

making a splash
standouts from the new wave of responsible products

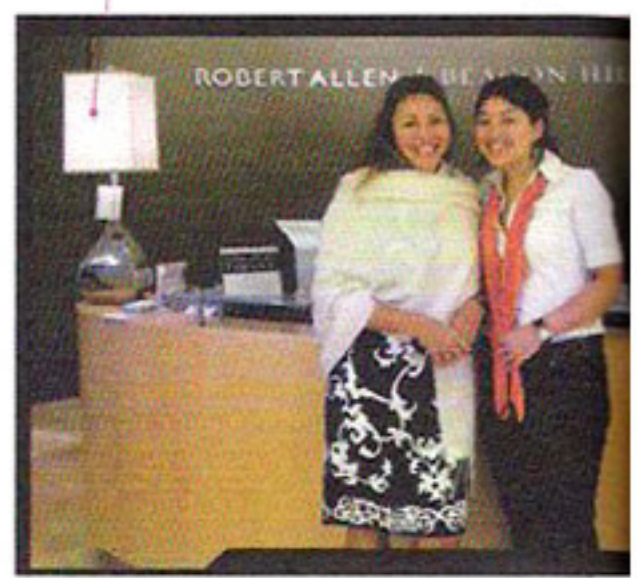
Following are scenes from several members' experiences over the course of the week.



➤ After spending the morning discussing work flow, resource libraries, fee structures and billing methods, residential designer Jennifer Duneier, Allied Member ASID, and Erica Regueiro, Student Member ASID, joined Duneier's client for some shopping at New York City's D&D building.



Beatriz Yuan, Student Member ASID, later wrote of her RWDW experience, "I've learned the importance of developing and maintaining excellent rapport and relationships with ... showroom design consultants, as they are integral to the success of an interior design business."



Regueiro, a student at Metropolitan Institute of Interior Design, selected Duneier to shadow because after visiting the designer's Web site, she felt the two "had similar styles."

➤ "[A shadow experience] wasn't available when I was in school," says Duneier, explaining her participation in RWDW. "I definitely saw the value."



"We're going to be friends for a long time," said Sandra Espinet, Allied Member ASID, of Beatriz Yuan, Student Member ASID, her guest for a day during RWDW.

"It was fun to see things through a student's eyes. Her color palette is much fresher." SANDRA ESPINET ALLIED MEMBER ASID